

## Santiago's Metro Expands

- ✦ Introduction
- ✦ Historical Background
  - Development of Metro System and Development of Construction Methodology
- ✦ Design & Construction of Line 2 South & Line 5 Extensions
  - Geology
  - Running Tunnels
  - Station Tunnels
  - Geotechnical Monitoring
- ✦ Construction Cost
- ✦ Outlook

NAT 2004 – Atlanta, GA  
Santiago's Metro Expands



## Introduction

### ✦ Metro's History

- 1965 - Predecessors of Metro S.A. are Founded
- 1966 - A Traffic Study for Santiago Recommends up to Five Subway Lines
- 1969 - First Design Work for Line 1
- 1975 - Metro Becomes Part of an Government Agency

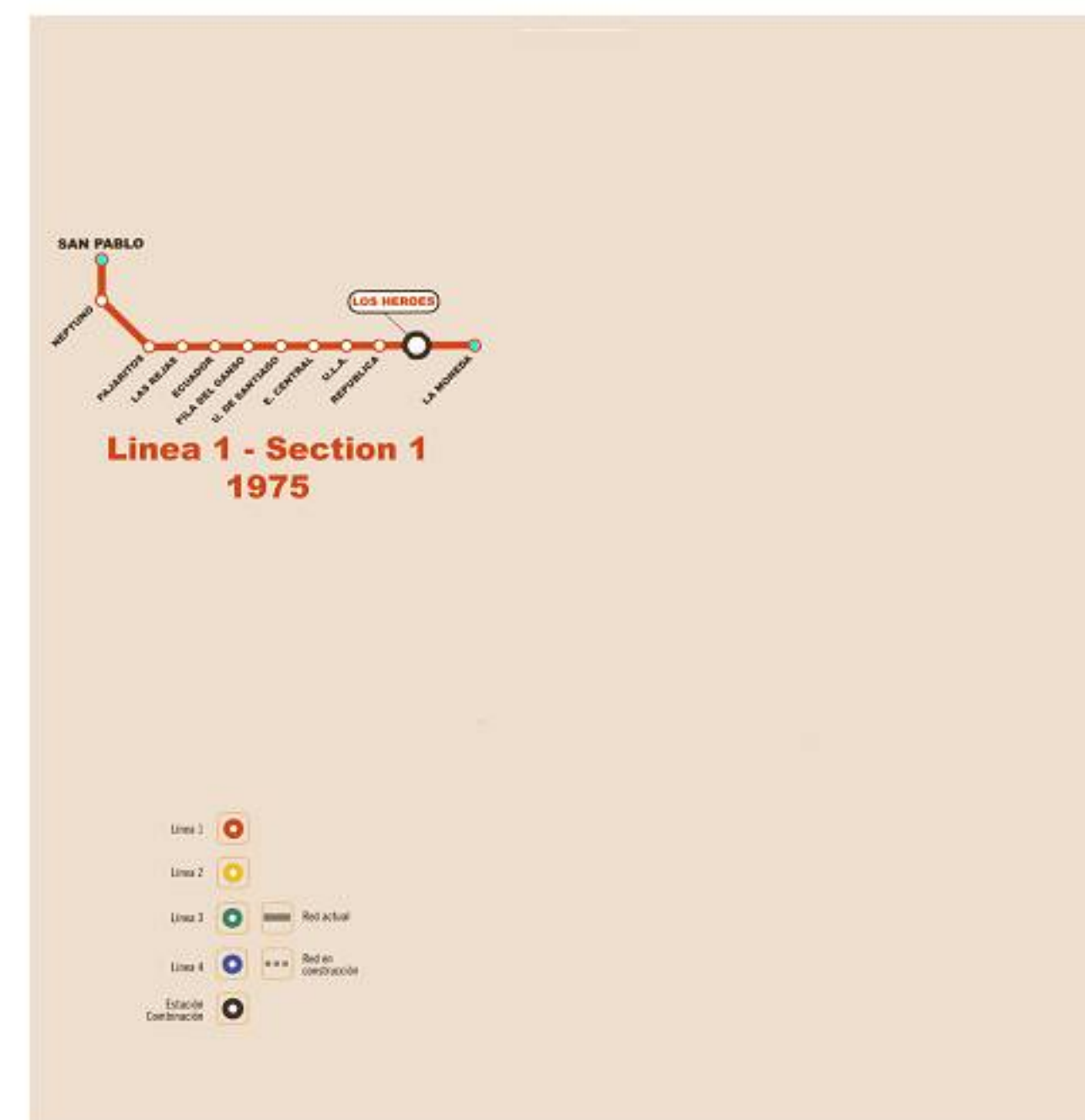
### ✦ Metro System:

- Length approximately 25 Miles (14 Miles Underground)
- 48 Stations at Grade, above Ground and below Ground
- 198.9 Million People used Metro in 2002
- Metro has 2,800 Employees
- Revenue of US\$82.7 Million in 2002

NAT 2004 – Atlanta, GA  
Santiago's Metro Expands



## Historical Background



NAT 2004 – Atlanta, GA  
Santiago's Metro Expands



## Historical Background



NAT 2004 – Atlanta, GA  
Santiago's Metro Expands



## Historical Background



Line 1 durch Providencia

NAT 2004 – Atlanta, GA  
Santiago's Metro Expands



# Historical Background



Line 1 entlang Via Apoquindo

NAT 2004 – Atlanta, GA  
Santiago's Metro Expands



# Historical Background



Line 1 - Station El Golf

NAT 2004 – Atlanta, GA  
Santiago's Metro Expands



# Historical Background



NAT 2004 – Atlanta, GA  
Santiago's Metro Expands



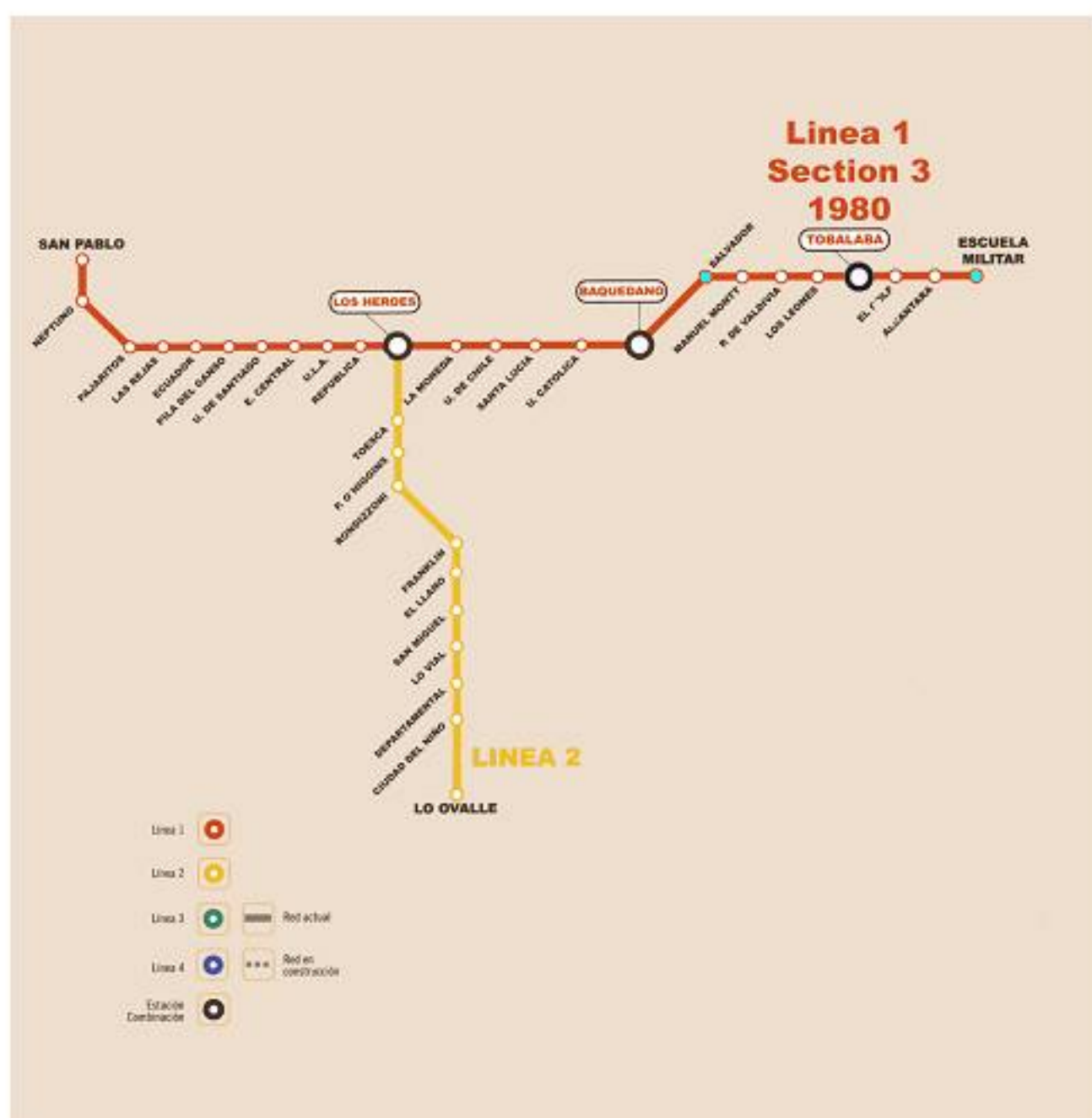
# Historical Background



NAT 2004 – Atlanta, GA  
Santiago's Metro Expands



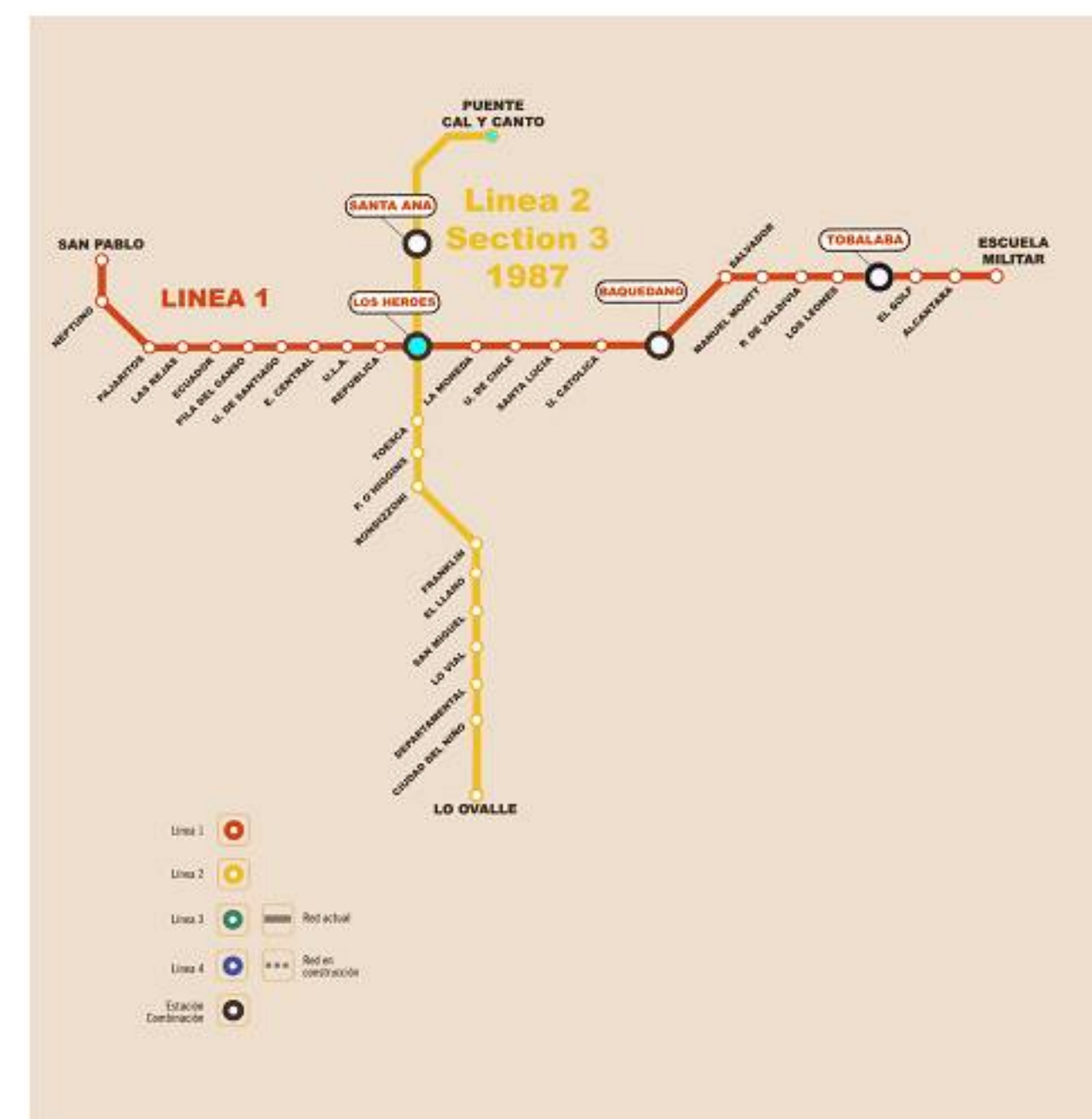
# Historical Background



NAT 2004 – Atlanta, GA  
Santiago's Metro Expands



# Historical Background



NAT 2004 – Atlanta, GA  
Santiago's Metro Expands



## Historical Background



NAT 2004 – Atlanta, GA  
Santiago's Metro Expands



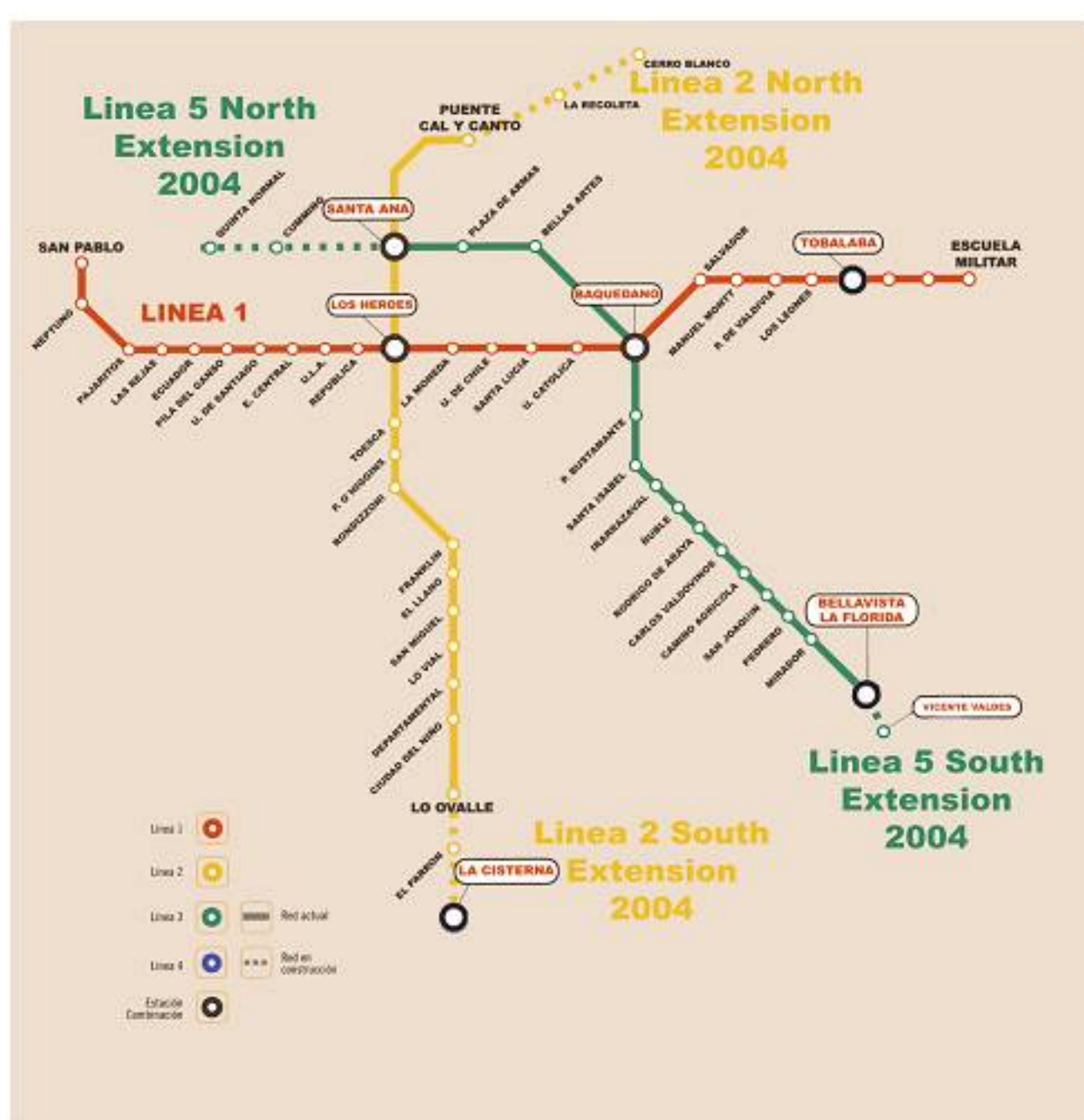
## Historical Background



NAT 2004 – Atlanta, GA  
Santiago's Metro Expands



## Historical Background



NAT 2004 – Atlanta, GA  
Santiago's Metro Expands



## Historical Background



NAT 2004 – Atlanta, GA  
Santiago's Metro Expands



## Design & Construction



NAT 2004 – Atlanta, GA  
Santiago's Metro Expands



## Design & Construction



NAT 2004 – Atlanta, GA  
Santiago's Metro Expands



Design & Construction



NAT 2004 – Atlanta, GA  
Santiago's Metro Expands



Design & Construction



NAT 2004 – Atlanta, GA  
Santiago's Metro Expands



Design & Construction



NAT 2004 – Atlanta, GA  
Santiago's Metro Expands



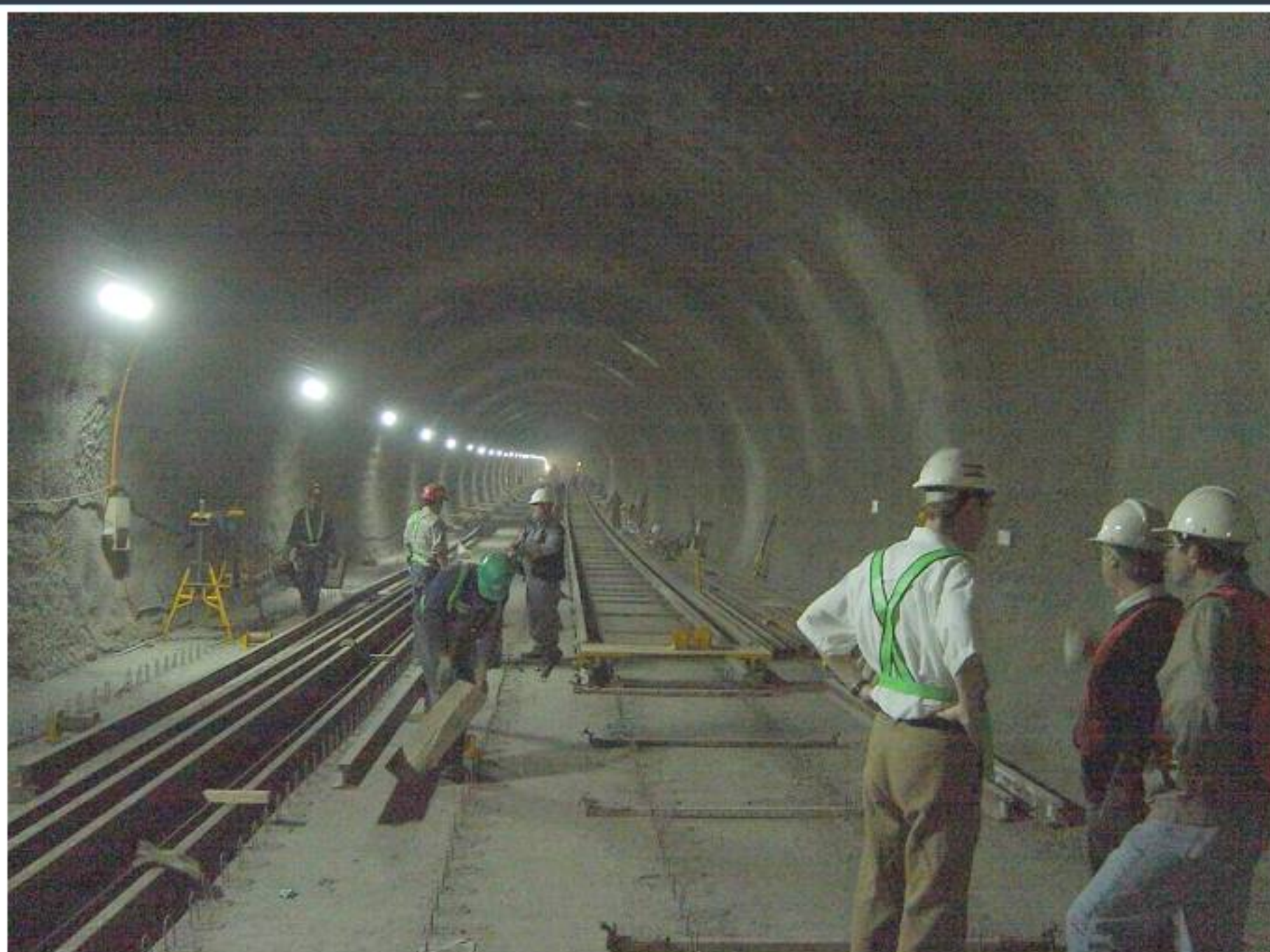
Design & Construction



NAT 2004 – Atlanta, GA  
Santiago's Metro Expands



Design & Construction



NAT 2004 – Atlanta, GA  
Santiago's Metro Expands



Station Design – La Cisterna



NAT 2004 – Atlanta, GA  
Santiago's Metro Expands



Design & Construction



NAT 2004 – Atlanta, GA  
Santiago's Metro Expands



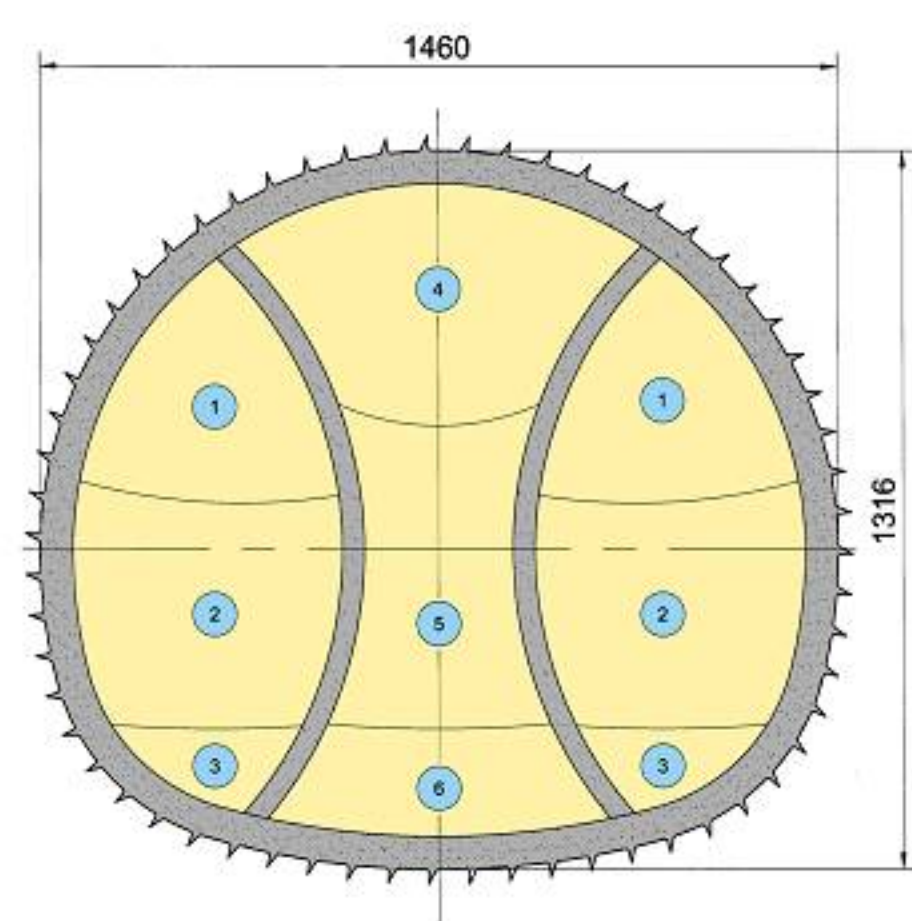
Design & Construction



NAT 2004 – Atlanta, GA  
Santiago's Metro Expands



Design & Construction



NAT 2004 – Atlanta, GA  
Santiago's Metro Expands



Design & Construction



NAT 2004 – Atlanta, GA  
Santiago's Metro Expands



Design & Construction



NAT 2004 – Atlanta, GA  
Santiago's Metro Expands



Design & Construction



NAT 2004 – Atlanta, GA  
Santiago's Metro Expands



Design & Construction



NAT 2004 – Atlanta, GA  
Santiago's Metro Expands



Design & Construction



NAT 2004 – Atlanta, GA  
Santiago's Metro Expands



Design & Construction



NAT 2004 – Atlanta, GA  
Santiago's Metro Expands



Design & Construction



NAT 2004 – Atlanta, GA  
Santiago's Metro Expands



Design & Construction



NAT 2004 – Atlanta, GA  
Santiago's Metro Expands



Design & Construction



NAT 2004 – Atlanta, GA  
Santiago's Metro Expands



Design & Construction



NAT 2004 – Atlanta, GA  
Santiago's Metro Expands



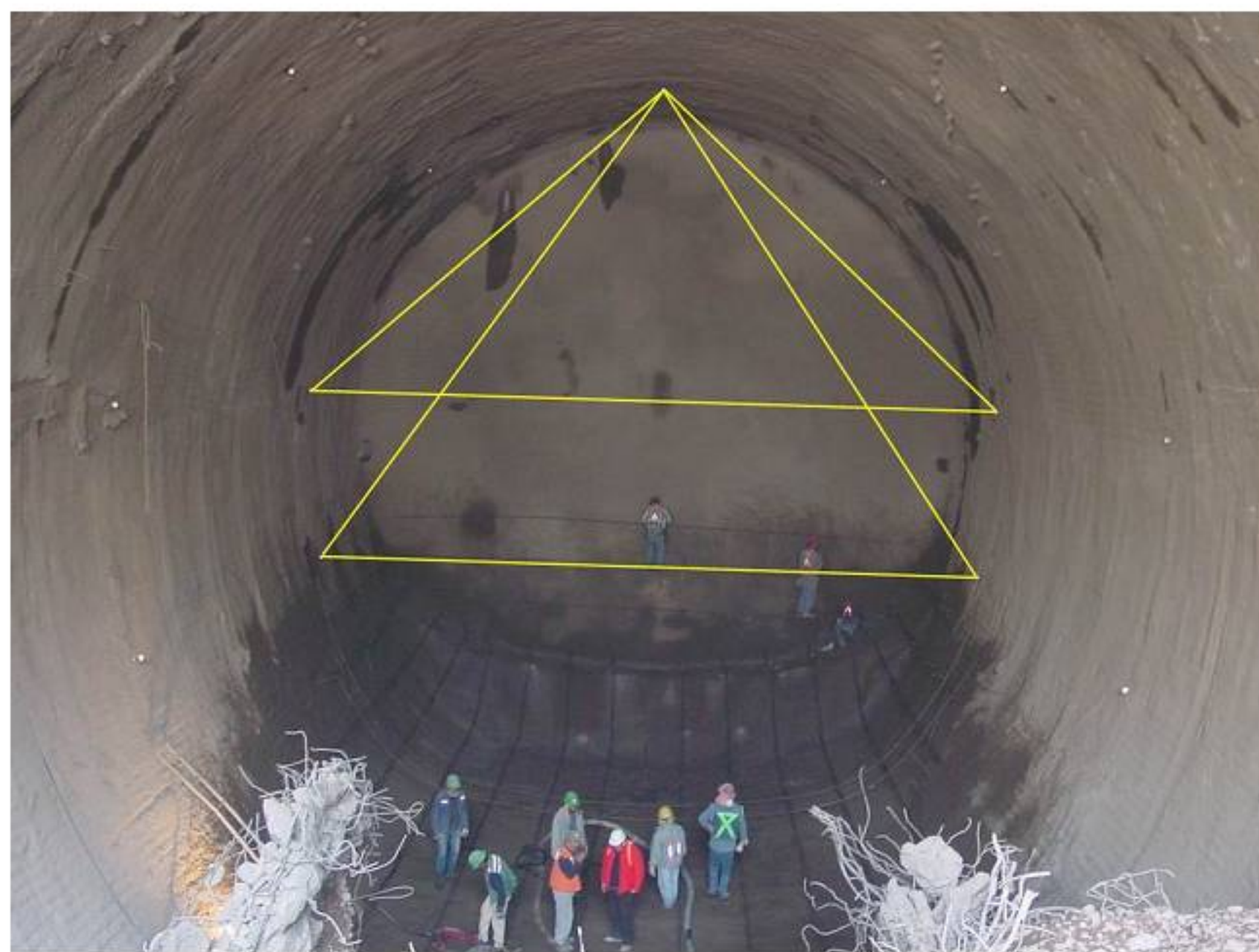
Design & Construction



NAT 2004 – Atlanta, GA  
Santiago's Metro Expands



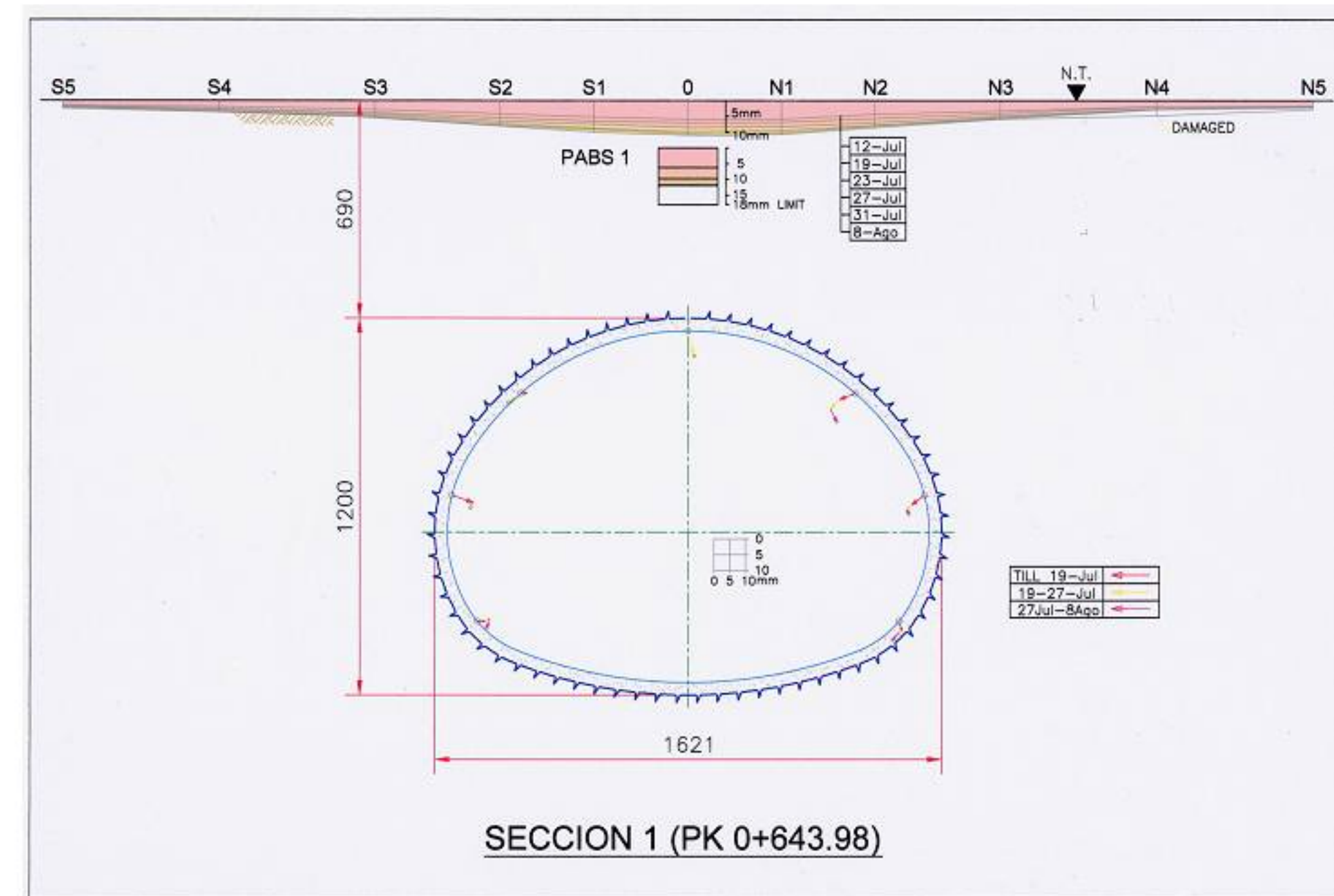
Design & Construction



NAT 2004 – Atlanta, GA  
Santiago's Metro Expands



Design & Construction



NAT 2004 – Atlanta, GA  
Santiago's Metro Expands



Costs



Construction Cost:

Linear Foot Running Tunnel:	US\$1,950
Linear Foot Station Tunnel:	US\$8,250
Geotechnical Instrumentation Including Monitoring per Mile Tunnel:	US\$412,500

Cost per Line:

Line 5 West Extension:	US\$39,925,000
Line 2 North Extension:	US\$32,570,000
Line 2 South Extension:	US\$29,650,000
Line 4 (including Line 4A):	US\$1,007,000,000

NAT 2004 – Atlanta, GA  
Santiago's Metro Expands



Outlook



Metro's Future:

- 2004 - Start Operations at Additional 4.0 Miles of Subway Including 6 Stations at Line 2 North and South, and at Line 5 West
- 2005 - Start Operations at Line 4 with a Total Length of approximately 21 Miles and 25 New Stations
- 2006 - Start Operations at a Second Extension of Line 2 North with a Length of 3.2 Miles and 5 Stations Currently Under Design

NAT 2004 – Atlanta, GA  
Santiago's Metro Expands



THANKS!

